

BOMA Export to Excel

Installation

ADT 2007 and Excel are required.

Use the default installation folder C:\Program Files\JTB World\JTBWorldBOMA.
If it is not used the files JTBWorldBOMA.cui and JTBWorldBOMA.reg has to be edited to correct the path.

Loading

Load the application manually with the NETLOAD command.
Select JTBWorldBOMA.dll.

To automatically load the application merge the file JTBWorldBOMA.reg into the registry by double-clicking on it.

To load the toolbar run the CUILOAD command and select the file JTBWorldBOMA.cui.

Notice

The recommendation is to **save all open drawings** or just leave an empty drawing open. The drawings that will be extracted are opened as read only so if you have not saved the drawing the unsaved changes will not be used for the export.

The requirements in ADT are.

Each space object must have a Property Set Definition named *SpaceObjects* attached. The property definition used are *Number*, *Name* and *Level*.

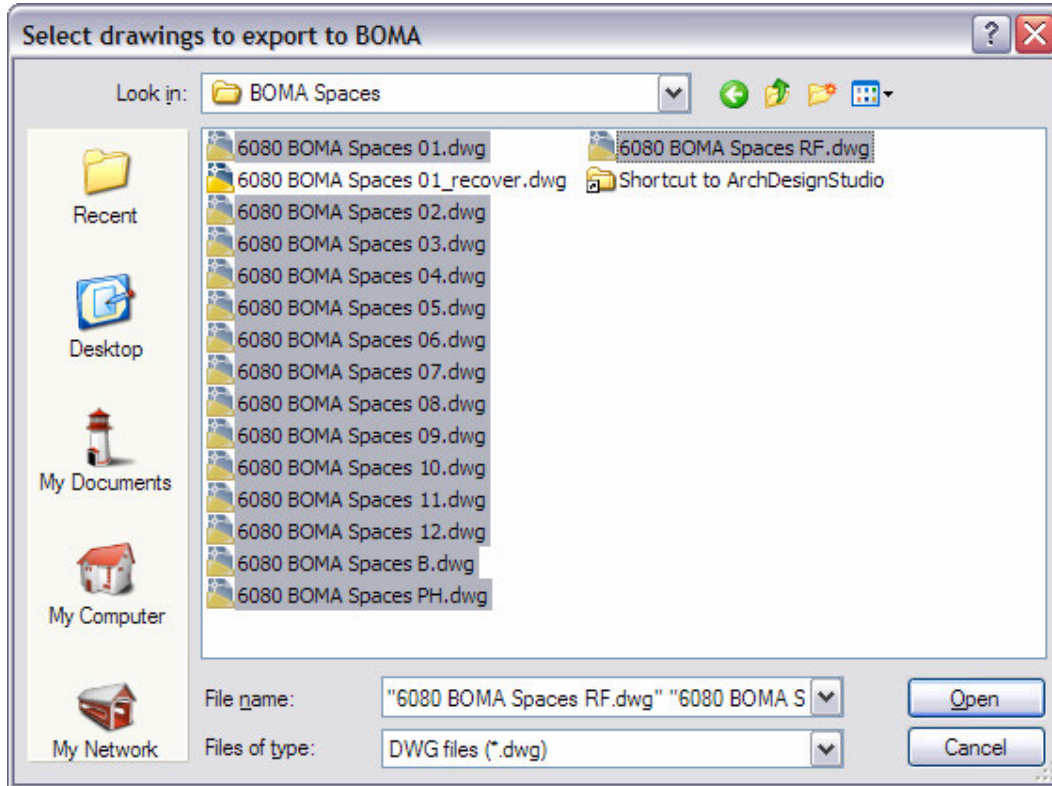
Each space style must have a Property Set Definition named *SpaceStyles* attached. The property definition used are *SpaceType_BOMA* and *UsableArea*.

SpaceType_BOMA values accepted are *Office Area*, *Store Area*, *Building Common Area*, *Gross Building Area*, *Gross Measured Area* and *Major Vertical Penetration*.

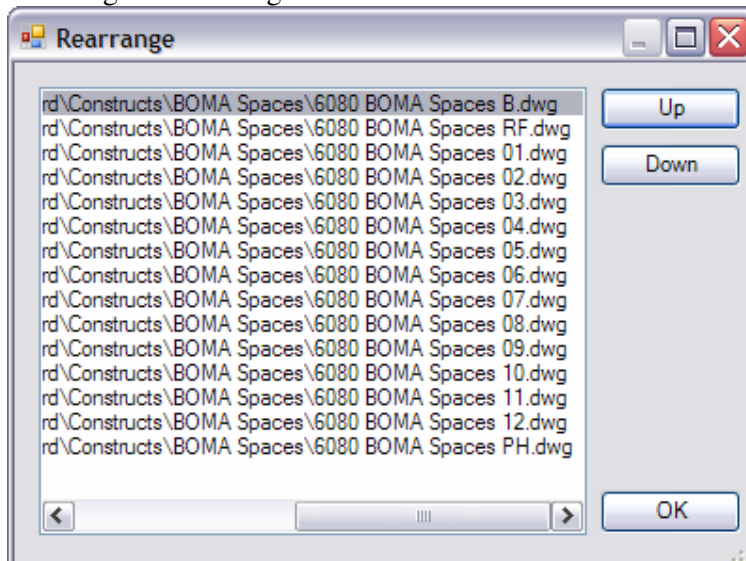
Running

The command is BOMAExportXLS.

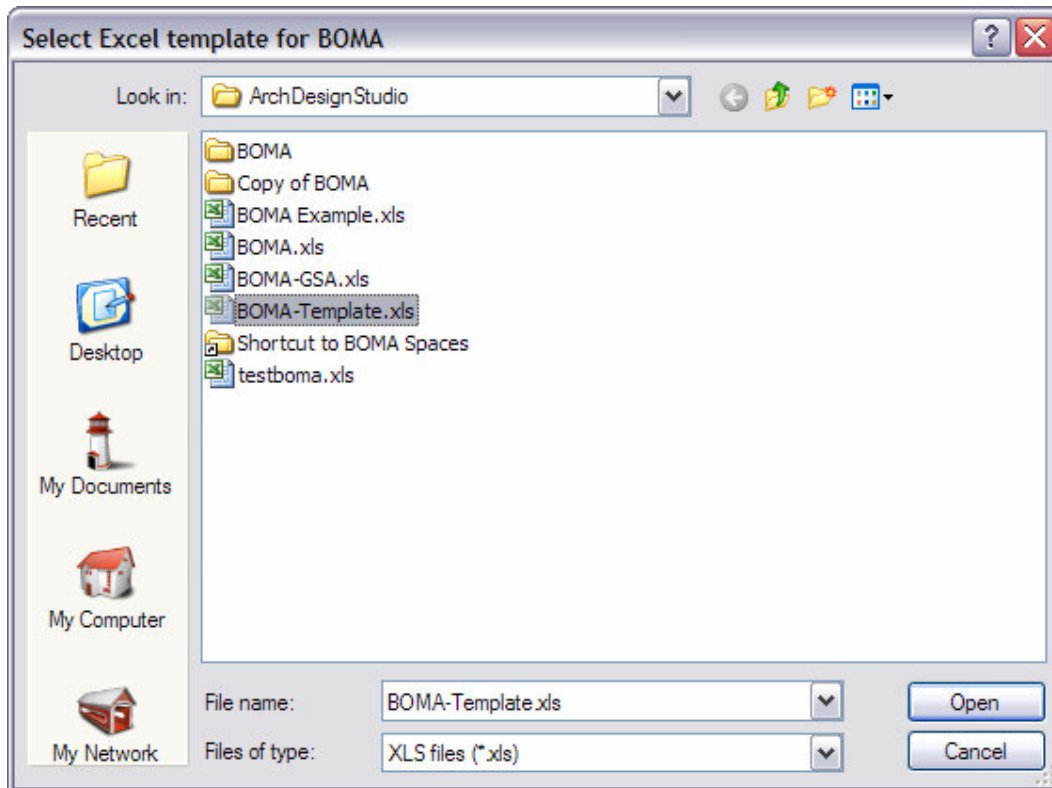
Select drawings to export.



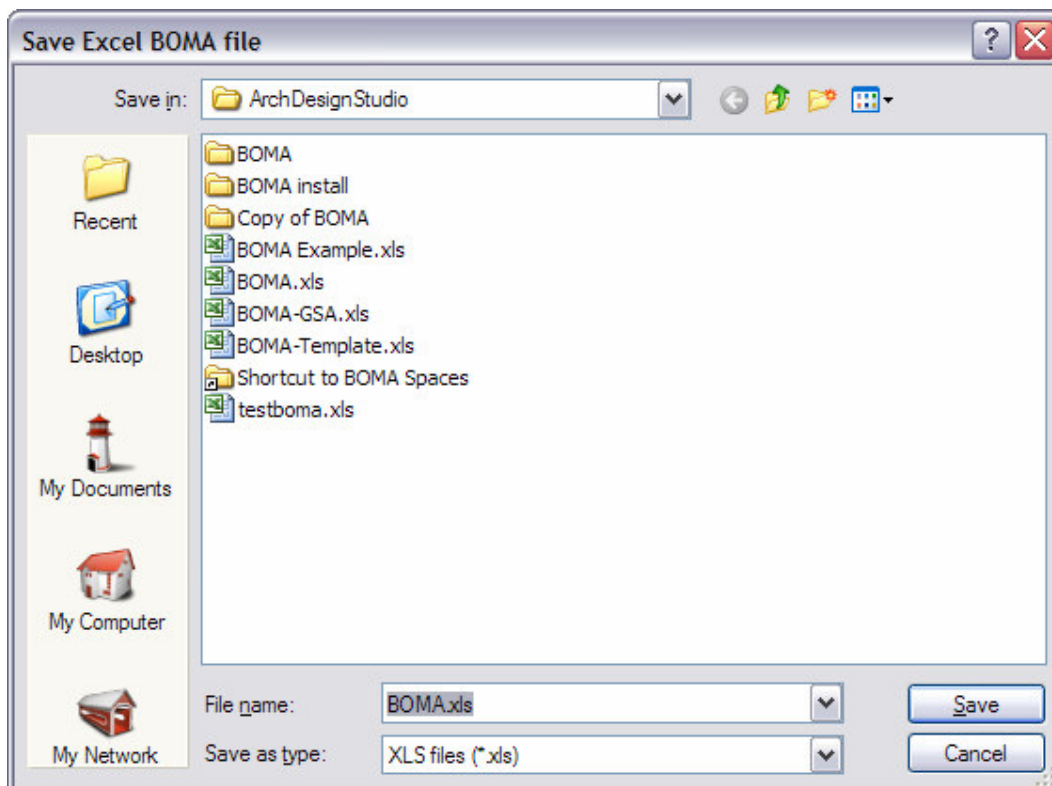
Rearrange the drawings if needed.



Select Excel template for BOMA. As default it is BOMA-Template.xls.



After the export you are prompted to save the created Excel BOMA sheet.



Vendor

JTB World

Jimmy Bergmark

<http://www.jtbworld.com/>

info@jtbworld.com