

Jimmy Bergmark A Practical Usage of eTransmit

Picture this, a user has a bunch of drawings which, as a part of their customer's delivery requirements, need to have their xrefs bound.

There are, as with any other task we do, a lot of different ways to accomplish this. ScriptPro is a free tool from Autodesk that could be used. There are other scripting applications like SmartPurger from JTB World, which could also be used.

But, now I will show you how to use eTransmit in AutoCAD 2005 for this purpose, as well as some useful tips, while you're completing your task.

ETransmit can be found in AutoCAD either in the File menu, or by typing 'eTransmit' on the command line.

Since eTransmit requires that the current drawing be saved, you can either open one of the drawings you want to transmit or start a new drawing and save it somewhere.

Since you don't want to have, for example, Drawing1.dwg included in your transmittal, you can just uncheck it in the Create Transmittal dialog box.



Now, I will show you how to create a new Transmittal Setup.

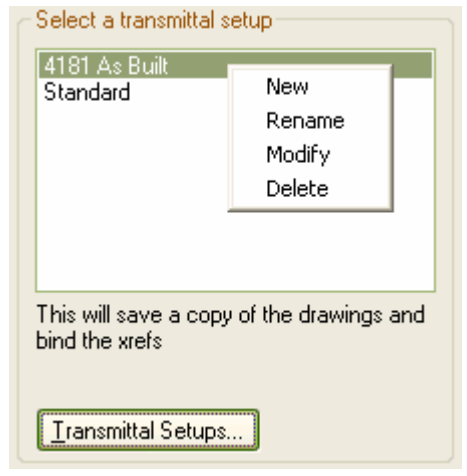
1. Click on the Transmittal Setups button.
2. In the Transmittals Setups dialog box click on the 'New' button.
3. In the New Transmittal Setup dialog box enter a name for the setup.
4. Press the Continue button.
5. Make changes in the Modify Transmittal Setup dialog box to fit your needs.

I want them to be placed in a specified folder, and to keep the existing drawing file format. I want all files in the same folder. I set the default plotter to 'none' and bind the external references, as well as give the setup a relevant description.
(see picture on top of next column for reference.)

1. Click on the 'OK' button, followed by the 'Close' button, in the Transmittal Setups dialog box.



2. You will see that the new setup is selected and current.
3. If you want to rename it, you can just right-click or click on the 'Transmittal Setups' button.



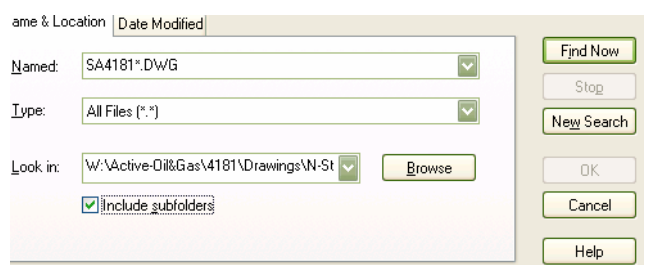
1. To modify the setup, double-click on the setup name.
2. To add files click on the 'Add file' button.
3. There, you can add both dwg files, as well as any other file you want included.

What You Do...

The situation is that I have a lot of folders with files within each. I don't want to open each folder, select the files and repeat the procedure as many times. So here are some GREAT tips.

1. In the 'Add File To Transmittal' dialog box.
2. Browse to the base folder where all your files are located.
3. Click on 'Tools' followed by 'Find'.
4. This will show you the 'Find' dialog box. In the 'Named' combo box, I enter SA4181*.DWG to filter out the drawings I want included in the search. The 'Look In' combo box already has the correct path.

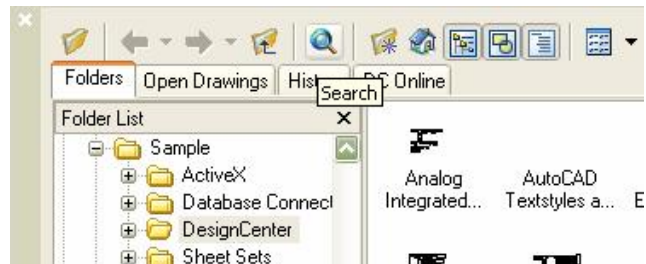
5. Also make sure that 'Include Subfolders' is checked.



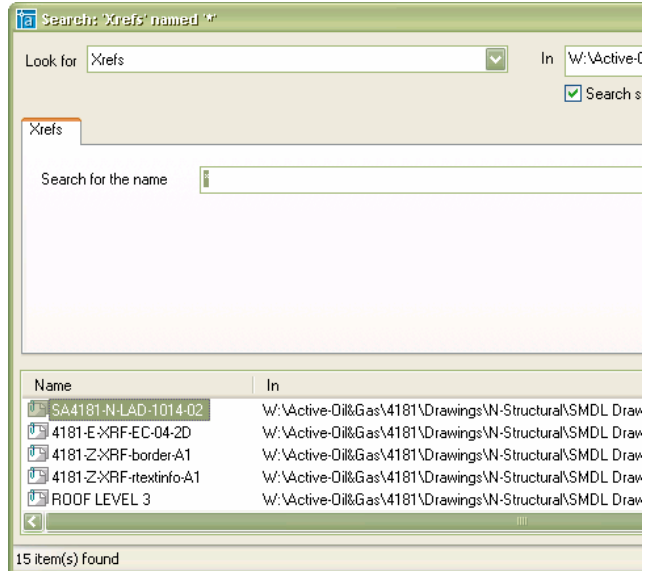
1. Click on 'Find Now'.
2. When the search is ready, click 'OK'.
3. In the 'Add File To Transmittal' dialog box click on 'Open'. Keep in mind, this could take a while, depending on how many drawings you selected.
5. After that, click 'OK'. Then, you have to wait a little more... Now, you're almost done.
6. Check in the folder where you wanted the bound drawings. There are also some pc3, ctb and other files that are not dwg files. (If you want you can just delete them.)

To make sure that all xrefs are bound, you can use this GREAT tip.

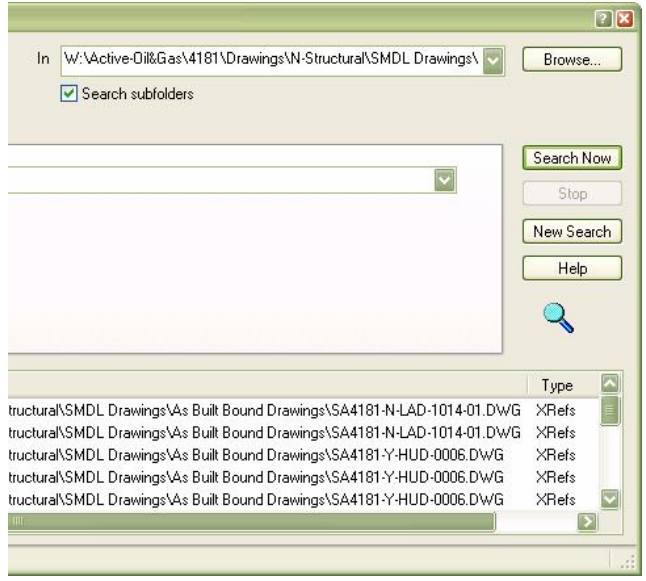
1. Open Design Center by pressing CTRL+2 in AutoCAD. (The command is ADCENTER.)
2. Now click on the 'Search' button.



3. In the 'Search' dialog box, select 'Xrefs to Look For' and enter the path where the bound xrefs are placed.
4. In the 'Search for the Name' combo box, enter * to make it search for all xrefs.



5. Next, click on 'Search Now' and it will show you all xrefs that are not bound.



These could then be controlled and handled manually.

In the sample above, I see that there are two drawings that have xrefs still in them. I opened the original drawing and found that some nested xrefs were unloaded. I opened the xref and changed it to overlay. When I reopened the problematic drawing I could now bind the xrefs. For different solutions when you cannot bind an xref look here: <http://www.jtbworld.com/autocadtips.htm>

Jimmy Bergmark is the CAD and Database Application Manager at Pharmadule Emtunga as well as the owner of JTB World where you can find tips like this, as well as useful applications. www.jtbworld.com